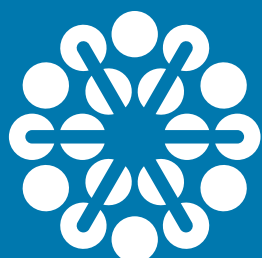


RESEARCH TO ACTION GUIDE

>> Bridging the
gap between
what we know
and what we do



Centre for
Applied Disability
Research

An Initiative of National Disability Services

A sustainable rural and remote workforce for disability



ABOUT THE CENTRE FOR APPLIED DISABILITY RESEARCH

The Centre for Applied Disability Research (CADR) is an initiative of NDS. CADR aims to improve the wellbeing of people living with disability by gathering insights, building understanding and sharing knowledge. CADR's applied research agenda is helping to build the evidence base and support stakeholders to better understand what works, for whom, under what circumstances and at what cost.

RESEARCH TO ACTION GUIDES

Bridging the gap between what we know and what we do.

Our objective is to build a comprehensive online collection of disability research and translational resources for the Australian context. Our Research to Action Guides are based on the best available local and international evidence and put together by subject matter experts to support research end users to engage with the evidence. We gather and analyse evidence about what works, and package that information into efficient and practical resources.

ACKNOWLEDGMENTS

This Guide was authored by Dr Angela Dew, UNSW Australia, Dr John Gilroy, University of Sydney and Professor Michelle Lincoln, University of Sydney. This resource was developed with support of Australian governments through the Research and Data Working Group.

SUGGESTED CITATIONS

Dew, A., Gilroy, J. & Lincoln, M (2016) A sustainable rural and remote and Aboriginal and Torres Strait Islander workforce for disability. Research to Action Guide, Good Practice Summary. Centre for Applied Disability Research. Available at www.cadr.org.au

Dew, A., Gilroy, J. & Lincoln, M (2016) A sustainable rural and remote workforce for disability. Research to Action Guide, Rapid Review. Centre for Applied Disability Research. Available at www.cadr.org.au

ABOUT THIS RESEARCH TO ACTION GUIDE: 'WORKING COLLABORATIVELY AT THE INTERFACE OF DISABILITY AND HEALTH SERVICES'

This Research to Action Guide articulates the key components of rural and remote workforce development in Australia presented by the existing research evidence. The Guide will be most useful for service managers, human resource managers, registered training organisation staff, and policy makers who have been charged with developing, building and sustaining a rural and/or remote workforce. This Research to Action Guide Evidence Summary and Rapid Review form part of the suite of resources produced by CADR on this topic. The suite also includes good practice examples, which are available at the CADR Clearing House, www.cadr.org.au

FEEDBACK

Do you have feedback, or a suggestion for a Research to Action Guide? We welcome your thoughts and ideas. Please contact info@cadr.org.au

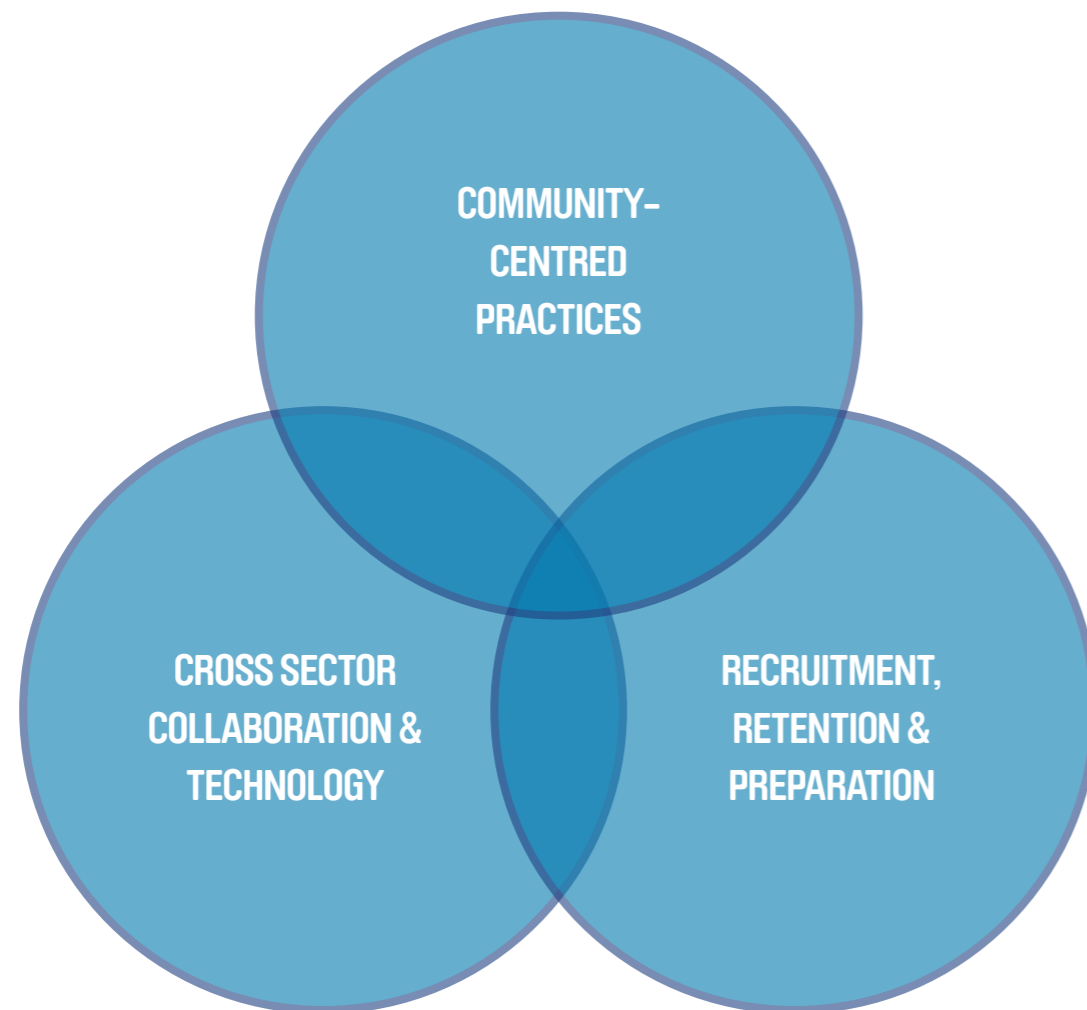
EQUITABLE ACCESS TO SUPPORTS AND SERVICES

Under the National Disability Insurance Scheme all Australians with permanent and significant disability regardless of where they live should have equitable access to supports and services.

CHALLENGES OF SUSTAINING A RURAL AND REMOTE DISABILITY WORKFORCE

1. Professional isolation
2. Travel time
3. Working conditions
4. Career opportunities
5. Scope of practice issues

BUILDING A SUSTAINABLE RURAL AND REMOTE DISABILITY WORKFORCE INVOLVES:



GROW YOUR OWN RECRUITMENT STRATEGIES



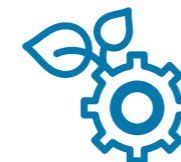
- ▶ Target school leavers
- ▶ Provide rural study opportunities
- ▶ Increase full and part time work options
- ▶ Employ family members and current volunteers

INCENTIVES TO STAY BUSH RETENTION STRATEGIES



- ▶ Working conditions
- ▶ Training and professional development
- ▶ Supervision, support and mentoring
- ▶ Networking opportunities
- ▶ Work/Family life balance

PREPARATION TO WORK IN THE BUSH RECRUITMENT & RETENTION STRATEGIES



- ▶ Generalist skills
- ▶ Personal attributes
- ▶ Cultural training

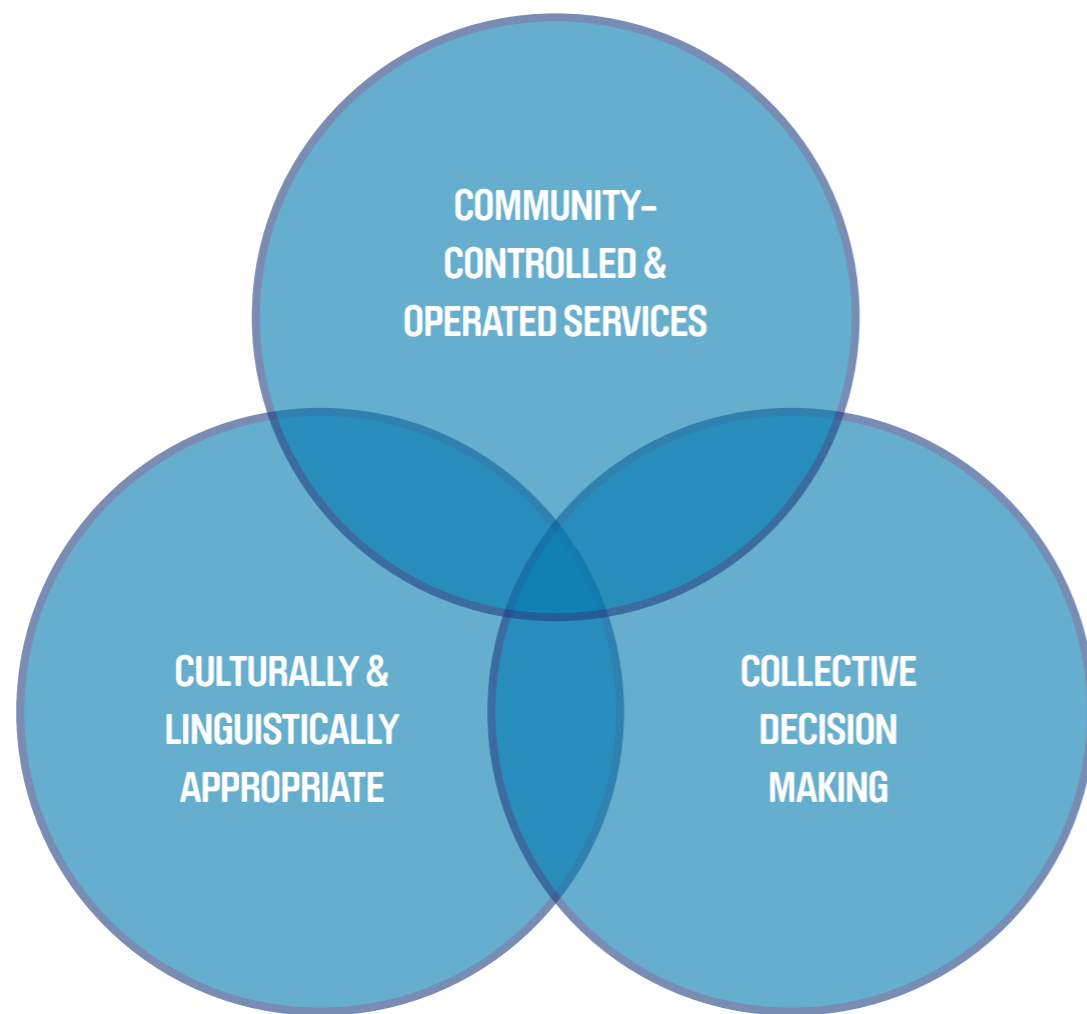
A WORKFORCE TO SUPPORT ABORIGINAL AND TORRES STRAIT ISLANDER PEOPLE WITH DISABILITY IN RURAL AND REMOTE AREAS

The evidence provides additional, targeted workforce development strategies to support the growth of a workforce to support Aboriginal and Torres Strait Islander People with disability.

EQUITABLE ACCESS TO SUPPORTS AND SERVICES

Aboriginal and Torres Strait Islander peoples who live in rural and remote areas experience higher rates of disability and are less likely to access services than those living in metropolitan areas. The Closing the Gap strategy commits the Australian government to ensure 90% of eligible Aboriginal and Torres Strait Islander peoples will receive funded support under the National Disability Strategy.

COMMUNITY-CENTRED PRACTICES INVOLVE:



GROW YOUR OWN RECRUITMENT STRATEGIES



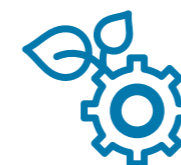
- ▶ Employee targets and criteria
- ▶ Tailored recruitment processes
- ▶ Appropriate selection criteria
- ▶ Scholarships, traineeships and cadetships
- ▶ Interview processes

INCENTIVES TO STAY BUSH RETENTION STRATEGIES



- ▶ Dedicated training pathways
- ▶ Career development opportunities
- ▶ Employee networks
- ▶ Dedicated roles in large mainstream organisations

PREPARATION TO WORK IN THE BUSH RECRUITMENT & RETENTION STRATEGIES



- ▶ Cultural training for Aboriginal and non-Aboriginal staff
- ▶ Beyond cultural training

A SUSTAINABLE RURAL AND REMOTE WORKFORCE FOR DISABILITY: A RAPID REVIEW OF THE LITERATURE

This paper reports on the literature which can be used to broaden our understanding of what works when building and sustaining rural and remote and Aboriginal and Torres Strait Islander workforces for disability. It aims to provide those responsible for workforce development with a summary of relevant research to inform their practice.

Research papers and other useful documents were identified through journal database searching and a search of relevant 'grey' literature such as policy and practice guidelines and associated documents.

RESEARCH QUESTIONS

1. Why is a sustainable disability and Aboriginal and Torres Strait Islander workforce needed in rural and remote areas of Australia?
2. What is the research evidence for what works?
3. What are the key components of a sustainable rural and remote and Aboriginal and Torres Strait Islander workforce for disability?

IN SUMMARY

All Australians with disability should have access to equitable supports regardless of where they live. There is a need to build and maintain a rural and remote workforce to support people with disability, their families and communities.

Based on a review of the evidence, three key components have been identified as working well to build a sustainable rural and remote and Aboriginal and Torres Strait Islander disability workforce:

- Apply community-centred practices that involve collective decision-making and are culturally and linguistically appropriate.
- Build workforce supply through recruitment and retention of a mix of local and outreach professionals alongside local community-based quasi- or non-professional workers.
- Improve workforce utilisation and efficiency through cross-sector collaboration and investment in technology to link the local and outreach workforce for service delivery and professional support.

Current gaps in the research evidence:

- Lack of workforce data on Australian rural and remote and Aboriginal and Torres Strait Islander disability workforce. A nationally consistent data base is required to better understand the workforce background, characteristics, distribution, expectations and intentions;
- Most of the available evidence on rural and remote workforce is based on health service providers (doctors, nurses and allied health professionals). There is a need to develop

disability sector evidence to address specific issues and to develop a Rural and Remote Disability Toolkit similar to the Services for Australian Rural and Remote Allied Health (SARRAH) web-based toolkit. Such a toolkit would cover off on many of the retention and preparation issues described in this report;

- Limited evidence on the effectiveness of cultural training in Australian rural and remote areas to inform the investment in this activity.

1. WHY IS A SUSTAINABLE DISABILITY AND ABORIGINAL AND TORRES STRAIT ISLANDER WORKFORCE NEEDED IN RURAL AND REMOTE AREAS OF AUSTRALIA?

Australia uses a number of different definitions of rural and remote. One of the most widely recognised is that used by the Australian Bureau of Statistics, the Australian Standard Geographical Classification, Remoteness Area (ASGC-RA). This defines inner regional, outer regional, remote or very remote geographical areas based on road distance from five other places, including the distance to the nearest regional centre and the nearest metropolitan conurbation.

The difficulty of recruiting and retaining an adequate health and community sector workforce in rural and remote areas is well established. Recruiting and retaining staff is more problematic the more remote the location. The challenges relate to professional isolation, time spent travelling, working conditions, career opportunities (including for family members), and scope-of-practice issues¹. Inconsistencies in workforce availability means that people with a disability who live in rural and remote areas are further disadvantaged in accessing services and supports^{2,3}.

Under the National Disability Insurance Scheme (NDIS) all Australians with permanent and significant disability, regardless of where they live, should have equitable access to supports and services to meet their needs. It is important therefore to build and maintain a flexible rural and remote workforce to support people with disability, their families and communities.

Aboriginal and Torres Strait Islander peoples who live in rural and remote areas experience higher rates of disability and are less likely to access services than those living in metropolitan areas^{4,5}. Recruiting Aboriginal and Torres Strait Islander peoples into health and community services has been a longstanding goal of the human services sector. Points 6 and 8 of the First People's Disability Network's (FPDN) Ten-Point Plan identified the need to develop the Aboriginal and Torres Strait Islander workforce to implement the NDIS in Aboriginal and Torres Strait Islander communities⁶. The Closing the Gap strategy commits the Australian government to ensure 90% of eligible Aboriginal and Torres Strait Islander peoples will receive funded support under the National Disability Strategy⁷. To achieve the government's commitment, a culturally aware and safe rural and remote workforce including trained and supported Aboriginal and Torres Strait Islander workers is required in disability and mainstream sectors.

2. WHAT IS THE RESEARCH EVIDENCE FOR WHAT WORKS?

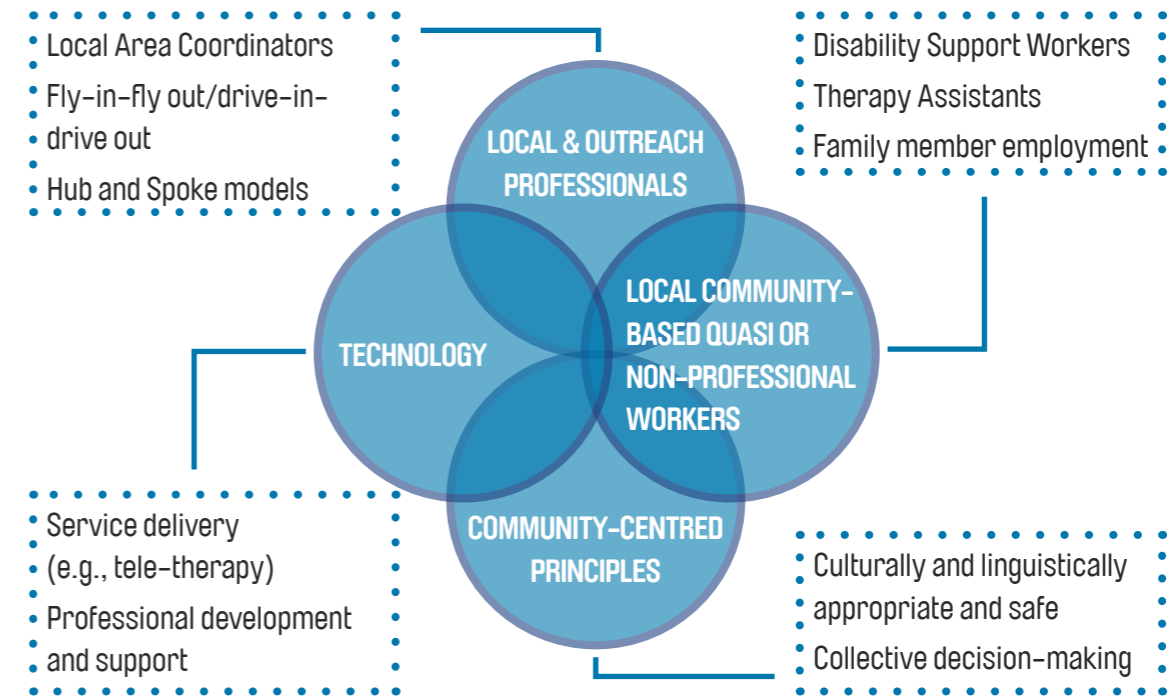
A data base and website key word search of peer-reviewed and grey literature spanning 2008-2015/6 was conducted for references to: rural and remote; disability; Aboriginal/Indigenous; and workforce.

2.1. Build the capability of the rural and remote and Aboriginal and Torres Strait Islander workforce

The evidence points to the need for a collaborative and cross-sectorial approach to invest in the capability and sustainability of rural and remote and Aboriginal and Torres Strait Islander workforces.

Given the identified challenges to sustaining a workforce in rural and remote areas, a collaborative approach will create systems to provide improved access to support for persons with disability living in those areas⁸⁻¹⁴. As represented in figure 1 below, building a collaborative and cross-sectorial workforce involves a mix of local and outreach professionals with specific skills and knowledge to deliver locally-directed seamless services^{8,15}, alongside local community-based quasi- or non-professional workers. Smarter use of technology will also enhance service delivery and reduce professional isolation for those living and working in rural and remote areas¹⁶⁻²⁰. The development of a flexible Aboriginal and Torres Strait Islander people's rural and remote workforce approach is ideally based on community-centred practices. Community-centred practices involve community controlled and operated organisations and services in collective decision-making and communal resource allocation^{5,21-29} in collaboration and partnership with non-Indigenous services^{22,30-34}.

FIGURE 1: KEY ELEMENTS OF A COLLABORATIVE CROSS-SECTORIAL RURAL AND REMOTE DISABILITY WORKFORCE



2.1.1 Build workforce supply

Building a collaborative cross-sectorial rural and remote workforce involves targeted recruitment, retention and workforce preparation strategies.

There is a plethora of research and reports related to recruitment and retention of the rural medical workforce^{1,35-37} and some relating to the allied health workforce³⁸⁻⁴¹. Given the imminent widespread roll out of the NDIS, the need for a comprehensive and coordinated approach to building the rural and remote and Aboriginal and Torres Strait Islander workforce for disability is evident.

RECRUITMENT

THE LITERATURE POINTS TO THREE MAIN APPROACHES TO RECRUITMENT OF A RURAL AND REMOTE WORKFORCE:

1. Grow Your Own through local workforce initiatives;
2. Incentives to Go Bush that attract workers to rural and remote settings;
3. Preparation to Work in the Bush.

While these strategies equally apply to Aboriginal and Torres Strait Islander peoples, additional specific recruitment strategies for this group are identified.

Grow Your Own

There is conclusive evidence that coming from a rural background significantly enhances the likelihood of remaining or returning to work in a rural or remote area^{1,35,42-46}. There is also reasonable evidence that providing undergraduate and postgraduate training in rural settings increases the likelihood of students from a rural background remaining to work in those settings and of some non-rural students deciding to work there^{1,35,42,47-49}.

Evidence for Grow Your Own strategies:

Target rural school leavers	provide rural school students with positive information about people with a disability and work opportunities in the disability sector ^{35,41,45,46} .
Increase full and part-time work experience and paid entry-level work options	disability sector jobs for rural school leavers and people wanting to re-enter the workforce in non-professional roles such as therapy assistants and disability support workers ^{42,50} .
Employment of family members and current volunteers	pay family members in exceptional circumstances, and current volunteers to provide support ^{51,52} .
Enhance opportunities for study in rural settings	rural and metropolitan students to study at Rural Clinical Schools, University Departments of Rural Health (UDRH) and Certificate Level TAFE courses ^{45,46,48} ; provide out of area students with good quality accommodation in rural/remote communities ¹⁹ .

Evidence for Aboriginal and Torres Strait Islander specific recruitment strategies:

Employee targets and criteria	comprehensive Aboriginal and Torres Strait Islander employee standards, targets and implementation strategies ⁵³ ; targeted, flexible recruitment with clear criteria that encourage Aboriginal and Torres Strait Islander peoples to apply ^{6,53-58} .
Recruitment processes	recruit with service users in mind ⁵⁵ ; job application information distributed through Aboriginal and Torres Strait Islander community inter-agencies and networks ⁵⁹ and Aboriginal and Torres Strait Islander newspapers and radio ⁶⁰ .

Selection criteria	job selection criteria to ensure Aboriginal and Torres Strait Islander applicants are not disadvantaged ⁶⁰ ; Aboriginal and Torres Strait Islander community workers involved in the development of job descriptions ⁵⁹ ; local people employed, trained and supported ^{21,25,27,28,31,33} ; entry level opportunities to target mature-aged people re-entering the workforce ⁶¹ and school, TAFE and university leavers ⁶¹ .
Scholarships, traineeships and cadetships	scholarships with guaranteed jobs in rural areas ^{53,54,56,62,63} ; traineeships with recognition of existing skills in accreditation ^{53,54,56,62,63} ; cadetships ^{53,54,56,62,63} ; a clear employment pathway after completion (so people are not returned to government employment support programs) ⁶⁴ .
Interview processes	adopt Aboriginal and Torres Strait Islander-friendly interviews and selection criteria ^{55,60} ; provide individual face-to-face job application and interview skills assistance and feedback to unsuccessful applicants.

Incentives to Go Bush

Literature indicates that social and financial incentives to make a tree- or sea-change to live and work in a rural or remote area have had some success although these may be short term for many. Social factors have been shown to be useful in attracting and keeping people working in rural and remote settings.

Evidence for incentives to Go Bush:

Sell the positive aspects of living and working in rural and remote areas and in the disability sector	enjoy a positive work/family life balance ^{47,65} ; make a difference to person with disability's life ⁶⁵ ; experience diverse and autonomous work roles ^{41,47,65} .
Financial incentives	remote incentive allowances and salary packages ^{35,36,38,48} ; higher wages ^{43,65,66} ; additional annual and long service leave ⁶⁵ ; reimbursement or credit for HECS fees ^{47,48} ; rental concessions ⁴⁸ ; scholarships ^{19,35} .

RETENTION

The rural and remote disability sector requires a culturally aware and safe workforce alongside a highly skilled Aboriginal and Torres Strait Islander workforce. The literature identifies a range of strategies that act as incentives for rural workers to stay working 'in the bush'.

Regardless of whether they are from a rural background or not, workers are more likely to stay in rural areas if their personal needs are met and organisations and communities support them⁴⁰. Many workers in rural and remote locations cite personal and professional isolation as a reason for leaving⁶⁷. Paying retention incentives may be more cost effective than constantly re-advertising and recruiting to vacant positions⁶⁸.

Incentives to Stay Bush

Evidence for incentives to Stay Bush:

Career pathways	opportunities for promotion, and engagement in research ^{36,66,68} ; recognition of achievement ^{47,49} ; accreditation of disability workers ⁵¹ ; retention bonuses ^{36,37,47,68} ; autonomy in work decisions ^{36,40,69} .
Good working conditions	flexible hours and shift lengths ^{41,47,66,67} ; financial incentives to offset overtime hours ⁴³ ; provision of locums/relief staff to cover periods of leave ^{1,36,47} ; adequate infrastructure including well-maintained clinical settings, technology, vehicle, and air conditioning ^{36,70} .
Training and professional development to overcome personal and professional isolation	regular, equitable and locally tailored training courses and conferences including: face-to-face in cities and regional towns and/or via technology through webinars, teleconferences and podcasts ^{1,8,10,13,18,19,35-38,40,41,47,48,50,66,71-79} ; targeted training that matches career stage and profession ^{44,75} ; collaborative training arrangements between the National Disability Insurance Agency and the University Departments of Rural Health (UDRH) ⁷⁶ ;

Supervision, support and mentoring to overcome personal and professional isolation	flexible options, including via technology, that minimise travel and maximise relevancy including peer to peer programs ^{39,67} ; involving personal learning networks and communities of practice ^{2,36,40,47,50,51} ; utilising mature-aged practitioners to work as part-time mentors ⁵⁰ ; training in reflective practice ⁸⁰ .
Networking opportunities to overcome personal and professional isolation	being part of a team or able to link with likeminded colleagues through professional networks of support face-to-face and/or via technology ^{2,36,39,40,47,75} .
Work/family life balance	feeling embedded in the community through participation in social and recreational activities, and having ready access to housing, childcare and work opportunities for spouses and education for children ^{1,35,36,40,41,43,47-49,70} .

Evidence for Aboriginal and Torres Strait Islander specific retention strategies:

Specific training pathways	through TAFE and university including peer support, mentoring, counselling and financial support ^{24,53,56,62,81} ; flexible training options e.g. regionally based intensive short courses ⁶² and via telecommunications; part time study support for training to attain higher clinical and management roles ⁵⁶ .
Career development opportunities	identified career progression pathways and development opportunities ^{28,82} ; mentoring, support and career development programs ^{23,31,56,58,81,83} that address issues related to conflicting job and family/community responsibilities; burden due to thinly spread services; expectation on Aboriginal and Torres Strait Islander staff to be 'Indigenous' experts ⁵⁸ ; identified professional and senior positions throughout the organisation ^{54,55} ; shared role and responsibility in supporting and working with Aboriginal and Torres Strait Islander communities among all staff (not just Indigenous staff) ⁵⁹ .

Aboriginal and Torres Strait Islander employee networks	include Aboriginal and Torres Strait Islander staff input into planning and implementation of new initiatives ⁵⁴ ; Aboriginal and Torres Strait Islander staff forums for communication, support and training including annual conferences ^{23,55,82} .
Dedicated Aboriginal and Torres Strait Islander roles in large mainstream organisations	dedicated roles as part of periodic strategic plans for example, Aboriginal Local Support Coordinators (ALSC) or Indigenous Case Managers ^{54,66,84} .

PREPARATION TO WORK IN THE BUSH

The literature identifies that in order to build the capability of the workforce, preparation is required for people considering work in rural and remote areas.

Working in rural and even more so in remote areas, involves a range of generalist skills⁴² and personal attributes⁸⁵ that differ from those needed to work in metropolitan areas. For workers who come into the rural/remote workforce without prior experience, limited understanding of the environment and poor personal preparation are often cited as being among the reasons for leaving⁸⁵.

There are a number of occupational health and safety issues specific to working in rural and remote areas. Issues related to travel include road and weather conditions, wildlife on the road, fatigue, and the need for safety equipment such as water, a satellite phone, spare tyres and adequate maps^{86,87}. Recommendations to prepare workers to deal with these issues included development of travel policies and guidelines, driving off road training and emergency first aid training^{86,88,89}. Personal worker safety in rural and remote areas is also highlighted with evidence of violence towards health workers, police and teachers due to a lack of anonymity, cultural issues, mandatory reporting requirements and the distance from management and support⁹⁰. Recommendations included better reporting of violent incidents, staff training in de-escalation techniques⁹⁰ and, in some situations and locations, using a buddy system of staff working in pairs⁸⁸.

Cultural training for non-Aboriginal and Torres Strait Islander workers was mentioned in almost all peer-reviewed and grey literature as the way to build the capacity of service providers to ensure cultural awareness, competency and safety is embedded in every practice^{6,30,91}. Cultural training is only one component of preparing non-Indigenous workers to support Aboriginal and Torres Strait Islander peoples with disability, their families and communities. The principles imparted to staff in cultural training must be embedded in all aspects of the work environment from policies and procedures to local practices encompassing staff development and performance⁹¹.

2.1.2 Improving workforce utilisation

There are a number of strategies that can be used to improve rural and remote workforce utilisation.

Evidence for strategies to improve workforce utilisation:

Collaboration between disability, health, aged care, education and community service providers	shared use of office space, technology, resources and 'back office' functions across local organisations to limit duplication and waste ⁷⁴ ; shared work spaces, resources and training to promote a better understanding of disability by generic healthcare and community services staff ⁸ .
Using technology	partnerships between carriers, government and/or communities to improve mobile coverage to rural communities ⁷¹ ; technology availability and support, training and resources to address individual, work place and community barriers to rural and remote workers using technology ¹⁸ .
Training and professional development	a combination of face-to-face training that allows networking and training via technology to limit travel; online communities of practice to connect practitioners around specific shared interests and particular projects ⁹² ; formal supervision to increase staff skills and competence ⁹³ .

Evidence for Aboriginal and Torres Strait Islander specific workforce utilisation strategies:

Cultural training	training of all new staff (both Aboriginal and Torres Strait Islander and non-Indigenous staff) to occur at induction, and to be ongoing for all staff employed in government and government-funded services and all students on placement in those services ^{25,32,53,57,62,82,94-98} ; include practical application to improve service outputs ⁶⁶ ; provide a local focus and an understanding of Aboriginal and Torres Strait Islander community managed services ^{5,55,59} ; relate training specifically to disability services, and differentiate from aged care services in Aboriginal and Torres Strait Islander communities ^{64,66} ; engage local community members to lead training ^{28,29,55} ; cover Aboriginal and Torres Strait Islander history, myths and misconceptions, cultural taboos or sensitivities, gender roles, models and case studies of culturally appropriate service delivery, use of language interpreters ^{5,28,30,59,60,66,99} .
-------------------	--

Beyond cultural training	<p>at all educational levels students learn about and learn to value Aboriginal and Torres Strait Islander culture as the First Peoples of Australia⁵³;</p> <p>non-Indigenous and Aboriginal and Torres Strait Islander workers promote and participate in local community events and celebrations to build relationships and provide information about supports and services^{55,98};</p> <p>staff engage in regular self-awareness processes to review and challenge individual and collective worker and organisation values and attitudes^{29,55};</p> <p>use technology including social media to improve contact between service providers and with people in remote communities (workers and people with disability and their families)^{21,31};</p> <p>implement strategies to manage ‘boundary crossings’ and ‘boundary violations’ for all staff (Aboriginal and Torres Strait Islander and non-Indigenous) who live and work in remote communities where staff experience community pressure due to expectations, visibility and issues around confidentiality¹⁰⁰;</p> <p>carefully match staff with the person with disability in relation to gender, age and interests⁵⁵;</p> <p>incorporate traditional beliefs, language, medicine and culturally appropriate art genres with service promotion and provision^{21,28,31,54}.</p>
--------------------------	--

3. WHAT ARE THE KEY COMPONENTS OF A SUSTAINABLE RURAL AND REMOTE AND ABORIGINAL AND TORRES STRAIT ISLANDER DISABILITY WORKFORCE?

Figure 2 (next page) provides an overview of an integrated approach to developing and sustaining a national disability rural and remote workforce. The key stakeholders responsible for implementing the approach at each level are identified.

Local community-based initiatives will have the greatest impact on investing in the capability of the rural/remote and Aboriginal and Torres Strait Islander workforce. These initiatives should be informed by community-centred principles driven by, and involving all community members – Aboriginal and Torres Strait Islander and non-Indigenous.

A combination of **pathways to grow** the rural/remote and Aboriginal and Torres Strait Islander workforce and **incentives to join** these workforces are required with specific attention to Aboriginal and Torres Strait Islander employment strategies. Key to these recruitment approaches is education, recognition of previous paid and unpaid experience, financial incentives, and promotion of positive rural impressions. **Incentives to stay** in the rural/remote and Aboriginal and Torres Strait Islander workforce will be maximised by preparatory

resources. A mix of personal and career incentives are most effective in retaining the rural/remote workforce.

Strategies to improve the efficiency of the rural/remote and Aboriginal and Torres Strait Islander workforce involve **cross-sector collaboration** and **better use of technology** for the delivery of training and professional development as well as service provision. The NDIS provides an opportunity to enhance the capacity of private practitioners and organisations to provide workforce solutions in rural/remote areas.

The approach indicated by the evidence can provide a disability and Aboriginal and Torres Strait Islander workforce to support the implementation of the NDIS in rural and remote areas of Australia.

FIGURE 2: INTEGRATED RURAL AND REMOTE AND ABORIGINAL AND TORRES STRAIT ISLANDER DISABILITY WORKFORCE

INVEST IN CAPABILITY	
<p>Local Community-Centred Initiatives</p> <p>Driven by and involving all community members – Aboriginal and Torres Strait Islander and non-Indigenous – underpinned by cultural training</p> <p>Key Stakeholders: People with disability, workers, employers, government</p>	
BUILD THE WORKFORCE	
<p style="text-align: center;">Pathways to grow the rural/remote workforce</p> <p>Education – school, TAFE, university</p> <p>Experience – lived experience, volunteering, placements</p> <p>Employment – entry level to professional level opportunities, traineeships</p> <p>Key Stakeholders: Government, employers, people with disability</p>	<p style="text-align: center;">Incentives to join the rural/remote workforce</p> <p>Education – rural learning opportunities</p> <p>Financial – scholarships, HECS debt relief, enhanced pay and conditions</p> <p>Positive rural impressions – media, social media, word of mouth</p> <p>Key Stakeholders: Government, employers, workers</p>
<p>Incentives to stay in the rural/remote workforce</p> <p>Career pathways and good working conditions</p> <p>Ongoing training and professional development</p> <p>Supervision, support, mentoring and networking opportunities</p> <p>Key stakeholders: Employers, government, workers</p>	
IMPROVE EFFICIENCY	
<p>Collaborative service structures</p> <p>Smarter use of technology</p> <p>Ongoing training and professional development</p> <p>Mix of public and private provider opportunities</p> <p>Key Stakeholders: Employers, workers, government, people with disability</p>	

REFERENCES

1. Health Workforce Australia, National Rural and Remote Health Workforce Innovation and Reform Strategy. 2013, HWA.
2. Dew, A., et al., The need for new models of delivery of therapy intervention to people with disability in rural and remote areas of Australia. *Journal of Intellectual and Developmental Disability*, 2012. 37(1): p. 50–53.
3. Wardlaw & Brown Consulting, Rural Links: Keeping young people with disability connected to their local communities final report and evaluation 2016: Launceston Tasmania.
4. Gilroy, J., et al., Twelve factors that can influence the participation of Aboriginal people in disability services. *Australian Indigenous Health Bulletin*, 2016. 16(1): p. online.
5. Centre for Applied Disability Research, Remote service provision in the Northern Territory. 2014, National Disability Services: Sydney.
6. First Peoples Disability Network Australia, Ten-point plan for the implementation of the NDIS in Aboriginal communities. 2013.
7. Macklin, J., Closing the Gap: Garma Festival, Arnhem Land, Northern Territory, in Campaign Speech. 2013, Australian Labor Party: Canberra.
8. National Rural Health Alliance and National Disability and Care Alliance, Delivering equitable services to people living with disability in rural and remote areas. Appendix 1 Implementation of DisabilityCare Australia in rural and remote areas, in Practical Design Fund. 2013, NRHA and NDCA.
9. Russell, D., et al., Helping policy-makers address rural health access problems. *Australian Journal of Rural Health*, 2013. 21: p. 61–71.
10. Wark, S., R. Hussain, and H. Edwards, Rural and remote area service provision for people aging with intellectual disability. *Journal of Policy and Practice in Intellectual Disabilities*, 2013. 10(1): p. 62–70.
11. Wakerman, J. and J. Humphreys, Sustainable workforce and sustainable health systems for rural and remote Australia. *Medical Journal of Australia*, 2012. 1(Suppl 3): p. 14–17.
12. Humphreys, J., et al., “Beyond workforce”: a systematic solution for health service provision in small rural and remote communities. *Medical Journal of Australia*, 2008. 188(8): p. S77–S80.
13. Dew, A., R. Barton, and J. Ragen, Delivering private therapy in rural areas: enabling high quality, sustainable and accessible services: A framework for rural private therapists, in Practical Design Fund. 2013, University of Sydney: Sydney.
14. Dew, A., et al., The development of a framework for high quality, sustainable and accessible rural private therapy under the Australian National Disability Insurance Scheme. *Disability and Rehabilitation* 2016. early online.
15. Dew, A., et al., Addressing the barriers to accessing therapy services in rural and remote areas. *Disability and Rehabilitation*, 2013. 35(18): p. 1564–1570.
16. Autism Queensland, Remote Technologies, in Practical Design Fund. 2013: Brisbane.
17. Garde, E. and A. Bruce, Specialist support at a distance, in Practical Design Fund. 2013, SCOPE Victoria: Melbourne.
18. Chedid, R., A. Dew, and C. Veitch, Barriers to the use of Information and Communication Technology by occupational therapists working in a rural area of New South Wales, Australia. *Australian Occupational Therapy Journal*, 2013. 60: p. 197–205.
19. Wellington, R., Consultation regarding NDIS workforce strategy mini-project on rural and remote workforce, A. Dew, Editor. 2014, Services for Australian Rural and Remote Allied Health (SARRAH): Sydney.
20. Jang-Jaccard, J., et al., Barriers for delivering telehealth in rural Australia: A review based on Australian trials and studies. *Telemedicine and e-Health*, 2014. 20(5): p. 496–504.
21. Arafmi Mental Health Carers Western Australia, Community consultations and development of best practice guidelines for funded service organisations and Indigenous families and carers of people with Tier 3 psychiatric disability in remote West Australian Indigenous Communities, in Practical Design Fund Report. 2013.
22. MJD Foundation, Disability Audit: a snapshot of Indigenous Australian disability in the very remote communities of Angurugu, Umbakumba, Milyakburra, Ngukurr, in Practical Design Fund Report. 2013.
23. Sharpley, C., An assessment of the Aboriginal drop-in support services in Moree and Coffs Harbour. 2011, Challenge Disability Services: Tamworth.
24. Kuipers, P. and O. Allen, Preliminary guidelines for the implementation of Community Based Rehabilitation (CBR) in rural, remote and indigenous communities in Australia. *Rural and Remote Health*, 2004. 4(online 291): p. <http://rrh.deakin.edu.au>.
25. Smith, K., et al., ‘Gotta be sit down and worked out together’: views of Aboriginal caregivers and service providers on ways to improve dementia care for Aboriginal Australians. *Rural and Remote Health*, 2011. 11(online 1650): p. <http://www.rrh.org.au>.
26. Kendall, E. and C. Marshall, Factors that prevent equitable access to rehabilitation for Aboriginal Australians with disabilities: the need for culturally safe rehabilitation. *Rehabilitation Psychology*, 2004. 49(1): p. 5–13.
27. Gauld, S., S. Smith, and M. Kendall, Using participatory action research in community-based rehabilitation for people with acquired brain injury: From service provision to partnership with Aboriginal communities. *Disability and Rehabilitation*, 2011. 33: p. 1901–1911.
28. Stephens, A., et al., Will the National Disability Insurance Scheme improve the lives of those most in need? Effective service delivery for people with acquired brain injury and other disabilities in remote Aboriginal and Torres Strait Islander communities. *Australian Journal of Public Administration* 2014. 73(2): p. 260–270.
29. Kuipers, P., et al., Aboriginal and Torres Strait Islander health practitioners in rural areas: Credentialing, context and capacity building. *Rural and Remote Health*, 2014. 14(2897): p. online.
30. National Disability Services, The NDIS implications for remote Indigenous service provision in the Northern Territory Project Stage One. 2013, NDS.
31. Rae, K., et al., Developing research in partnership with Aboriginal communities – strategies for improving recruitment and retention. *Rural and Remote Health*, 2013. 13(online 2255): p. <http://www.rrh.org.au>.

32. Aboriginal Disability Network of NSW, Telling It Like It Is: A report on community consultations with Aboriginal people with disability and their associates throughout NSW. 2012.
33. LoGiudice, D., et al., Lungurra Ngoora – a pilot model of care for aged and disabled in a remote community – can it work? *Rural and Remote Health*, 2012. 12(online 2078): p. <http://www.rrh.org.au>.
34. Russell, D. and J. Humphreys, Meeting the primary healthcare needs of small rural communities: Lessons for health service planners. *Rural and Remote Health*, 2016. 16(3695): p. online.
35. Wilson, N., et al., A critical review of interventions to redress the inequitable distribution of healthcare professionals to rural and remote areas. *Rural and Remote Health*, 2009. 9(online 1060): p. <http://www.rrh.org.au>.
36. Buykx, P., et al., Systematic review of effective retention incentives for health workers in rural and remote areas: Towards evidence-based policy. *Australian Journal of Rural Health*, 2010. 18: p. 102–109.
37. Dolea, C., L. Stormont, and J. Braichet, Evaluated strategies to increase attraction and retention of health workers in rural and remote areas. *Bulletin of the World Health Organization*, 2010. 88: p. 379–385.
38. Lincoln, M., et al., Recruitment and retention of allied health professionals in the disability sector in rural and remote New South Wales, Australia. *Journal of Intellectual and Developmental Disability*, 2014. 39(1): p. 86–97.
39. Services for Australian Rural and Remote Allied Health. Online resources for allied health workers in rural and remote areas. 2014 [23/06/14].
40. O’Toole, K., A. Schoo, and A. Hernan, Why did they leave and what can they tell us? Allied health professionals leaving rural settings. *Australian Health Review*, 2010. 34: p. 66–72.
41. Keane, S., et al., Survey of the rural allied health workforce in New South Wales to inform recruitment and retention. *Australian Journal of Rural Health*, 2011. 19: p. 38–44.
42. NSW Health, NSW Rural Health Plan DRAFT. 2014, <http://www.health.nsw.gov.au/rural>: Sydney.
43. Rourke, J., WHO recommendations to improve retention of rural and remote health workers – important for all countries. *Rural and Remote Health*, 2010. 10(online 1654): p. <http://www.rrh.org.au>.
44. Keane, S., Factors affecting the recruitment and retention of allied health professionals in rural NSW, in Faculty of Health Sciences. 2013, University of Sydney: Sydney.
45. Greenhill, J., J. Walker, and D. Playford, Outcomes of Australian rural clinical schools: A decade of success building the rural medical workforce through the education and training continuum. *Rural and Remote Health*, 2015. 15(2991): p. online.
46. Kumar, K., et al., Rural and remote young people’s health career decision making within a health workforce development program: A qualitative exploration. *Rural and Remote Health*, 2015. 15(3303): p. online.
47. Services for Australian Rural and Remote Allied Health, Principles of recruitment and retention of allied health professionals to remote Australian communities, in Position Paper. 2009, SARRAH.
48. Productivity Commission, Early Childhood Development Workforce, in Research Report. 2011, Productivity Commission: Melbourne.
49. Strasser, R. and A. Neusy, Context counts: training health workers in and for rural and remote areas. *Bulletin of the World Health Organization*, 2010. 88: p. 777–782.
50. National Rural Health Alliance, Twenty steps to equal health by 2020: the NRHA’s 20–point plan for improving health services and health workforce in rural and remote areas. 2012, NRHA.
51. Cootharinga North Queensland, et al., NDIS Workforce Ready, in Practical Design Fund. 2013.
52. Cortis, N., et al., Building an industry of choice: Service quality, workforce capacity and consumer-centred funding in Disability Care: Final report for United Voice, Australian Services Union, and Health and Community Services Union. 2013, Social Policy Research Centre UNSW Australia: Sydney.
53. NCOSS Council of Social Service of NSW, NSW Aboriginal community care gathering committee policy position paper: Leading our way in community care. 2007.
54. NSW Ombudsman, Improving service delivery to Aboriginal people with a disability: A review of the implementation of ADHC’s Aboriginal Policy Framework and Aboriginal Consultation Strategy. 2010, NSW Ombudsman: Sydney.
55. NSW Government, Living Life My Way: Yarnin’ about disability: Sharing what Aboriginal communities across NSW told us. 2013, ADHC: Sydney.
56. Aboriginal Health and Medical Research Council, Be the change that makes the difference: NSW Aboriginal community controlled health services Aboriginal Employment Program Report. 2013.
57. Purcal, C., et al., School readiness program for Aboriginal children with additional needs: working with children, families, communities and service providers, in SPRC Report 4/13. 2013, Northcott Services & Social Policy Research Centre: Sydney.
58. O’Neill, M., E. Kirov, and N. Thomson, A review of the literature on disability services for Aboriginal and Torres Strait Islander peoples. *Australian Indigenous Health Bulletin*, 2004. 4: p. 1–26.
59. National Disability Services and Cerebral Palsy Alliance, Aboriginal resources and pathways project: Access and equity for Aboriginal people with a disability: Strategies for success. 2010: Sydney.
60. Western Australian Disability Services Commission, Aboriginal people with disabilities: Getting Services Right brochure. 2006: Perth.
61. Integrated Living, Closing the Gap: providing culturally appropriate DisabilityCare to Indigenous Australians with disability, in Practical Design Fund Project Report. 2013.
62. Ellis, R., Developing training pathways to meet the needs of Aboriginal people with disability. 2008, Flinders University: Adelaide.
63. Biddle, N., C. Brennan, and M. Yap, Effectiveness of traineeships and apprenticeships for the Aboriginal and Torres Strait Islander population, in Closing the Gap Clearing House. 2014, Australian Institute of Health and Welfare and Australian Institute of Family Studies: Canberra.
64. Riemer, J. and D. Brookes, Discussion re draft NDS mini–project literature review Rural and Remote Workforce – Indigenous, A. Dew and J. Gilroy, Editors. 2014, First Peoples Disability Network Australia: Redfern, Sydney.

65. Donnelly, D., et al., Finding the workforce to deliver the NDIS vision, in Practical Design Fund. 2013, Instinct and Reason.
66. Productivity Commission, Disability Care and Support: Inquiry Report. 2011, Productivity Commission: Canberra.
67. Gallego, G., et al., Factors affecting retention of allied health professionals working with people with disability in rural New South Wales, Australia: Discrete choice experiment questionnaire development. *Human Resources for Health*, 2015. 13(22): p. Open access online.
68. Chisholm, M., D. Russell, and J. Humphreys, Measuring rural allied health workforce turnover and retention: what are the patterns, determinants and costs? *Australian Journal of Rural Health*, 2011. 19: p. 81–88.
69. Gallego, G., et al., Should I stay or should I go? Exploring the job preferences of allied health professionals working with people with disability in rural Australia. *Human Resources for Health*, 2015. 13(53): p. Open access online.
70. Gregory, G., Consultation on the NDIS workforce strategy mini-project: Rural and remote workforce, A. Dew, Editor. 2014, National Rural Health Alliance: Sydney.
71. National Rural Health Alliance, Connectivity for rural and remote health, in Fact Sheet. 2013.
72. Wakerman, J., R. Curry, and R. McEldowney, Fly in/Fly out health services: the panacea or the problem? *Rural and Remote Health*, 2012. 12(online 2268): p. <http://www.rrh.org.au>.
73. Lin, I., et al., Developing competencies for remote and rural senior allied health professionals in Western Australia. *Rural and Remote Health*, 2009. 9(online 1115): p. <http://www.rrh.org.au>.
74. National Disability Services Victoria, Workforce Strategy: Victorian Disability Services Transition Plan. 2011, NDS Victoria: Melbourne.
75. Humphreys, J., et al., Improving primary health care workforce retention in small rural and remote communities – how important is ongoing training and education? 2007, Australian Primary Health Care Research Institute.
76. National Rural Health Alliance, Submission to Community Services and Health Industry Skills Council 2014 Environmental Scan. 2014, NRHA.
77. Little, F., et al., Nourishing networks: an interprofessional learning model and its application to the Australian rural health workforce. *Rural and Remote Health*, 2012. 12(online 2022): p. <http://www.rrh.org.au>.
78. Mitchell, J., et al., Telemedicine for the delivery of professional development for health, education and welfare professionals in two remote mining towns *Journal of Telemedicine and Telecare*, 2001. 7: p. 174–180.
79. Mitchell, J., et al., An evaluation of a network for professional development in child and adolescent mental health in rural and remote communities. *Journal of Telemedicine and Telecare*, 2000. 6: p. 158–162.
80. Kuipers, P., A. Hurwood, and L. McBride, Audit of allied health assistant roles: Suggestions for improving quality in rural settings. *Australian Journal of Rural Health*, 2015. 23: p. 185–188.
81. Gilroy, J., The theory of the cultural interface and Indigenous people with disabilities in New South Wales. *Balayi: Culture Law and Colonialism*, 2009. 10: p. 44–58.
82. NSW Department of Ageing Disability and Home Care, Access and equity plan: Strengthening services for Aboriginal people 2009–2011. 2009, ADHC: Sydney.
83. Bailey, J., et al., Developing research capacity building for Aboriginal and Torres Strait Islander health workers in health service settings. *Rural and Remote Health*, 2006. 6(online 556): p. <http://www.rrh.org.au>.
84. NSW Human Services and Ageing Disability and Home Care, Aboriginal service delivery model: delivering for Aboriginal people with disability and their families. 2010, ADHC: Sydney.
85. Campbell, N., D. Eley, and L. McAllister, What does personality tell us about working in the bush? Temperament and character traits of Australian remote allied health professionals. *The Australian Journal of Rural Health* 2013. 21: p. 240–248.
86. Health, S.f.A.R.a.R.A. Safety and survival skills. 2016 2.06.16]; Available from: <http://sarrah.org.au/content/safety-and-survival-skills>.
87. Western Australian Government. Staying Alive on the Road. 2008 2.06.16]; Available from: https://www.commerce.wa.gov.au/sites/default/files/atoms/files/staying_alert_at_the_wheel.pdf.
88. Australian Government Comcare, Comcare’s Guide to Remote or Isolated Work. 2013: Canberra.
89. Government of South Australia. Safe driving tips: Country driving. Safer and Smarter Drivers 2016 2.06.16]; Available from: <http://www.mylicence.sa.gov.au/safe-driving-tips/country-driving>.
90. Urbis, Keeping People Safe: Stage 1 of the Working Safe in Rural and Remote Australia project, Rural Doctors Association of Australia, et al., Editors. 2012: Canberra.
91. Downing, R., E. Kowal, and Y. Paradies, Indigenous cultural training for health workers in Australia. *International Journal for Quality in Health Care*, 2011. 23(3): p. 247–259.
92. Wenger, E., B. Trayner, and M. de Laat, Promoting and assessing value creation in communities and networks: A conceptual framework. 2011, Ruud de Moor Centrum: Open Universiteit.
93. Bordin, E., A working alliance based model of supervision. *Counseling Psychologist*, 1983. 11(1): p. 35–42.
94. NSW Family and Community Services Ageing Disability and Home Care, Family and Community Services Aboriginal Strategy 2013–2015: Better outcomes for Aboriginal people and communities. 2013, ADHC: Sydney.
95. Motivation Australia and Aboriginal Resource and Development Services Inc., Yolnu information sharing and clarity of understanding, in Practical Design Fund Report. 2013.
96. Denman, L., Enhancing the accessibility of public mental health services in Queensland to meet the needs of deaf people from an Indigenous Australian or culturally and linguistically diverse background. *Australian Psychiatry*, 2007. 15: p. S85–S89.
97. Lindeman, M. and V. Newman, Addressing training needs for community care assessment in remote Indigenous communities. *Geriaction*, 2006. 24: p. 15–21.
98. Green, F., “Not just existing but living life”, in Practical Design Fund. 2013, Cooloola Human Services Network Gympie Qsld.

99. Gladman, J., C. Ryder, and L. Walters, Measuring organisational-level Aboriginal cultural climate to tailor cultural safety strategies. *Rural and Remote Health*, 2015. 15(3050): p. online.

100. Malone, J., Ethical professional practice: exploring the issues for health services to rural Aboriginal communities. *Rural and Remote Health*, 2012. 12(online 1891): p. <http://www.rrh.org.au>.



Centre for
**Applied Disability
Research**

An Initiative of National Disability Services

NDS gratefully acknowledges the support of the NSW Government in establishing the NDS Centre for Applied Disability Research.

NDS

National Disability Services